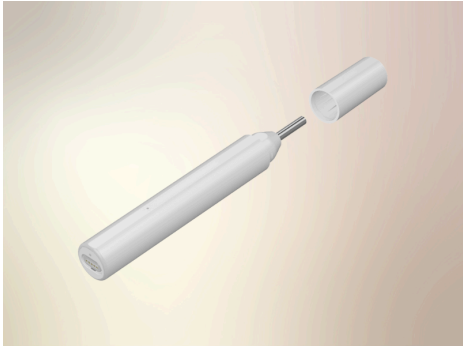


Sensacare Product Specification Sheet

SENSASCOPE OTOSCOPE



Product Overview

The SensaScope Otoscope is a professional-grade visual examination tool with a high-definition camera and six LED shadowless lamps. Designed for ear, nose, throat, oral, skin, and equipment inspection, it supports USB connectivity to Android, iOS, Mac, and Windows devices.



Product Name:
SensaScope Otoscope
Model: SB0-20

Category: High-Definition
Digital Otoscope



Size: 134.5 x 17.8 x 17.8mm,
1-hour fast charge, 90
minutes of use per charge.



Charging time: 0.5-1hr
Battery Capacity: 180mAh
Bluetooth: BLE 5.0

Standby Time: 40 days

Key Features

- HD camera with 720p and 640p resolution
- Cold light LED shadowless illumination
- Smart magnetic cover switch (auto on/off)
- Suitable for ear, nose, throat, skin exams
- Intelligent non-inductive temperature control
- Illumination: 6 cold-light LEDs: 4000Lux @ 2cm, 500Lux @ 5.5cm
- Suitable for: Adult, Infant, Pediatric
- IP67 waterproof (lens only)



Camera: 720p@15fps or
640p@15fps video, photo
support, 1.5-2.0cm focal
length, 70° FOV, 3.9mm lens
diameter, JPEG photos,
MP4/AVI videos, six LED
lights.



Package Contents:
SensaScope Otoscope, User
Manual, 1m Magnetic to USB-
A/USB-C/Micro USB Cable,
1m Magnetic to Lightning
Cable



Certifications & Compliance:
CE/ROHS/FDA. 2-year
standard warranty.

Environmental Conditions

Operating Temp: 0°C to 40°C (32-104 °F) | Humidity: 10-95% RH
Storage Temp: -40°C to 70°C